

# ***Caldecote Journal***



***September - November 2023***

# Caldecote Journal

## September - November 2023

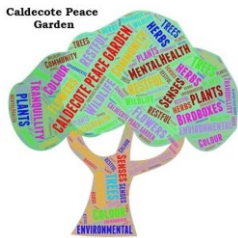
### The Caldecote Journal

Keeping the community informed of local issues, events, village activities and useful information. The Journal will also publish reports, short stories, poems and other material produced by members of the community, subject to available space. All contributions are welcome.

If you are a village organisation, please use the Journal to report your activities and inform the community of any meetings, events and functions. The deadline for the next Journal is the **8th November 2023**.

Please pass copy to the Editor by this date to: **Journal4Caldecote@gmail.com**

The Journal is financed by Caldecote Parish Council and issued quarterly to all parish households free of charge. The Journal can also be viewed online: [www.caldecote.gov.uk](http://www.caldecote.gov.uk).



### Caldecote Peace Garden Community Project

The Peace Garden continues to evolve. We will be planting bulbs ready for our spring display. Volunteers are needed for the weekend of 29<sup>th</sup> September to help prepare the flower beds for the winter.

Please contact Polly Anne Field on 01954 212230 if you are able to help.

---

### Caldecote, Dry Drayton & Hardwick Community Car Scheme



This Car Scheme is available for anyone requiring transportation to essential medical or social destinations and has no other means of transport. To **book a driver**, please contact one of our Co-ordinators below:

Derek Evans	07464 052 521
Lizzie Coe	07387 395 296
Gill Stott	07464 069 483

**Please call between 8.30am – 6.00pm, Monday – Friday only**  
(Please do not call on weekends and bank holidays.)

To enable a suitable driver to be arranged, please call at least 48 hours before your appointment.

For each journey, passengers pay £3.50 for a local journey. For longer trips, 30p per mile is charged. Please pay **by cash**, our drivers cannot accept card payment.

## Diary Dates

Date	Event	For more info:
1st Thursday of ea. month	Parish Council Meetings, The Pavilion 7pm	<a href="http://www.caldecote.gov.uk/">www.caldecote.gov.uk/</a> <a href="mailto:parishclerk@caldecote.gov.uk">parishclerk@caldecote.gov.uk</a>
<b>Tues 12<sup>th</sup> September</b>	<b>Community Hub Re-opening, Café @ The Pavilion, 9.30am – 3.30pm</b>	
16 <sup>th</sup> & 17 <sup>th</sup> September	Cambridge Autumn Food, Home and Craft Fair, Parker's Piece	
Fri 29 <sup>th</sup> & Sat 30 <sup>th</sup> September	Cambridge Oktoberfest, Jesus Green	<a href="http://www.cambridge-oktoberfest.co.uk/">www.cambridge-oktoberfest.co.uk/</a>
Sun 1 <sup>st</sup> October	Harvest Festival Holy Communion, Childerley Chapel	
<b>Thurs 19<sup>th</sup> October</b>	<b>Village Hall AGM, 7.30pm</b>	
19-26 <sup>th</sup> October	Cambridge Film Festival	<a href="http://www.cambridgefilmfestival.org.uk/">www.cambridgefilmfestival.org.uk/</a>
10-27 <sup>th</sup> November	Cambridge Jazz Festival	<a href="http://www.cambridgejazzfestival.info/">www.cambridgejazzfestival.info/</a>
<b>Sunday 12<sup>th</sup> November</b>	<b>Remembrance Sunday, Peace Garden, 10.50am</b>	
16-19 <sup>th</sup> November	Cambridge Literary Winter Festival	<a href="http://www.cambridgeliteraryfestival.com/">www.cambridgeliteraryfestival.com/</a>
<b>Sat 2<sup>nd</sup> December</b>	<b>PTA Christmas Fair, Caldecote School, 2-4pm</b>	





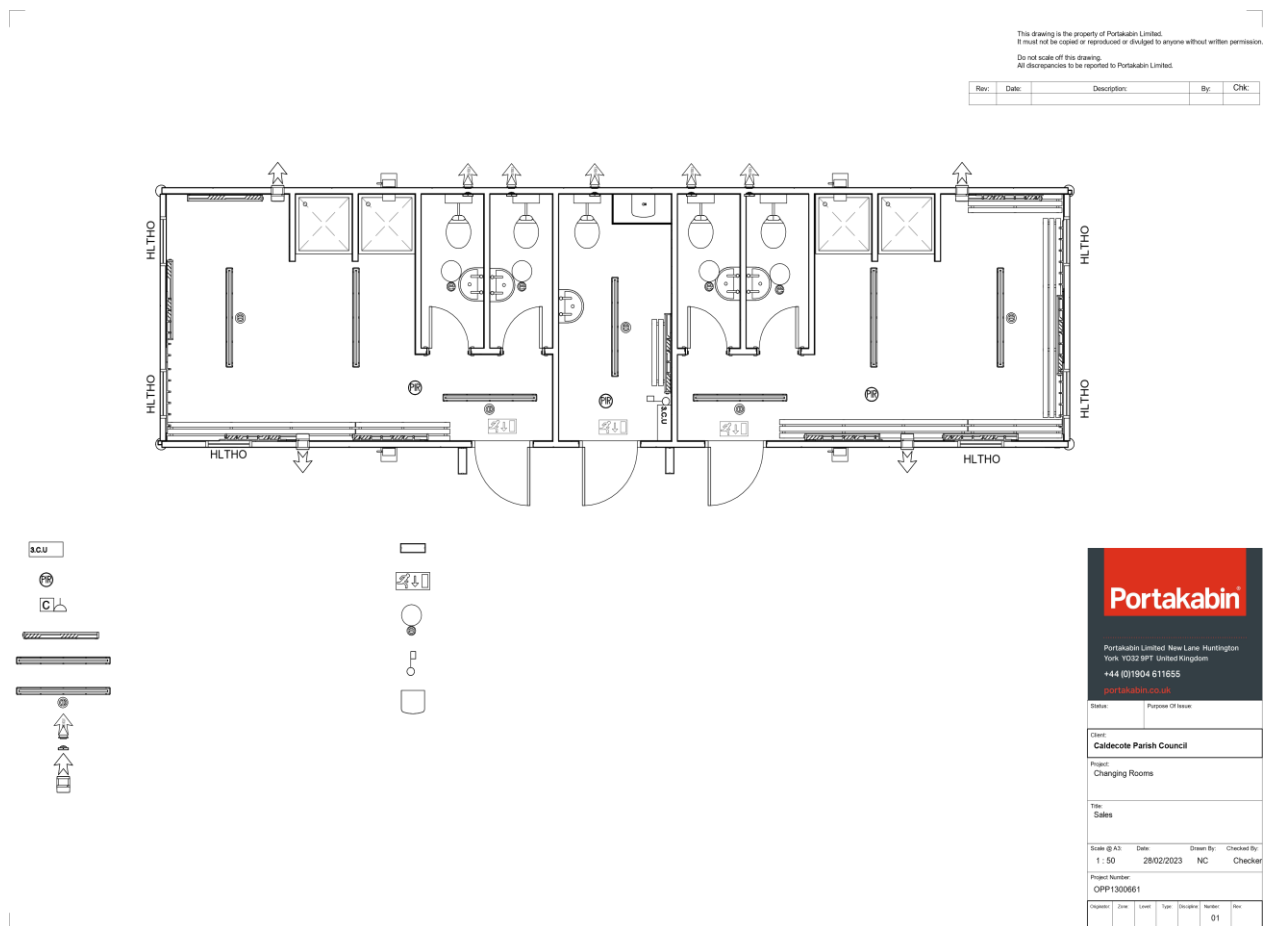
## Caldecote Parish Council

Parish Council does not meet in August, but the work of the council carries on.

We still receive planning applications, which are dealt with by our planning working party ready for ratification by full council.

The Council recently wrote to Anthony Browne, MP with regards to mitigation for the village should the proposed EWR line proceed to cut across the top of the village. A copy of the letter is published on the next page.

We have received confirmation from SCDC that we do not need planning permission for the new Portakabin which will replace the existing the current storage building which is no longer fit for purpose. Below is the proposed layout of the new building.



We expect the work will start in October and be complete by end of November.  
The new facility will create a clean and warm environment for use of our sporting teams.

Alan Melton  
Clerk to the Council  
parishclerk@caldecote.gov.uk  
07771 524093

For information and notices - [www.caldecote.gov.uk/](http://www.caldecote.gov.uk/)

## Letter from Caldecote Parish Council to our MP regarding the impact of EWR on our village should it proceed in its current form...

Rt. Hon Anthony Browne, MP  
(by email [anthony.browne.mp@parliament.uk](mailto:anthony.browne.mp@parliament.uk))

21st July 2023

Dear Anthony,

### East West Rail

Thank you for meeting with Caldecote Parish Council on 23rd June. It was both helpful and informative, and you were sympathetic to the particular plight of Highfields Caldecote with regards to the current route announced by EWR.

We discussed the issues facing the village of Highfields Caldecote, and the devastating effect the rail line would have on our village should the current plans go ahead to carve through the top of the village. Although we feel that the announced route is not the best route in terms of value for money to the tax-payer and the environmental damage it would cause, not least considerable concerns about the prospect of massive housing growth in the area that cannot be sustained without major investments in services and infrastructure, especially with regards to water supply, we must also look at mitigation should the rail line proceed.

With this in mind, we now write to you to ask for your assistance to help improve the outcome for Caldecote. We would ask that EWR link their plans to the local travel and development plans and investigate 2 options that we have discussed with them: to realign the route to the east, or to extend their proposed tunnel under the A428 so that it proceeds underneath the entrance to Caldecote and doesn't become a cutting until east of Highfields Farm. Our reasoning for this request is detailed below:

1. The density of population affected – EWR seriously underestimated the number of people living within close quarters to the proposed line. There are many more houses on the north side of the proposed line that were not shown on the map they used when selecting this route, as their map was totally out of date. On the south side they failed to take account of the new All Angels Park development which again was not shown on their map. At the last consultation we calculated 53 households within 75m and a further 103 households within 200m and a few more have been built since. This does not take into account the vast number of people to be affected on the Bourn Airfield Development. This is still a quiet, rural village and with perhaps the exception of morning and early evening rush hour we enjoy quiet gardens, the sound of birds and at night especially you could hear a pin drop. To have a train run every 15mins in such close proximity to so many houses will irreparably alter the character of this village.

2. Village cut off from services - The line travels around all villages this side of Bedford through fields, except Caldecote which it actually cuts in two! The area that would be cut off from the rest of the village by the line not only includes a significant number of residencies, but also our only village shop, our village sign, and the bus stop for our college kids to travel to college. The walk along trees and hedgerows to our shop is a regular route for the elderly, dog walkers and children who enjoy the exercise up to the shop and back, enjoying the daffodil verges in the spring and the views across the field at the top of the village. To have to walk over a bridge across a railway cutting, would make access to our only shop and bus stop very much harder for elderly, disabled, and families with young children.

3. Highfields Road is the only entrance in and out of the village - The road at the bottom of the village, Main Street, is in places a single lane rural road with restrictions on lorries and HGV's, is regularly closed in the winter due to flooding and is not used for regular access to the village. A rail line cutting across the entrance to the village would drastically affect the entrance to the village and its identity as a rural community.

4. Vital field at the top of Highfields – a) The field west of the village, through which the rail line will cut after crossing the A428, is a well fought for rural barrier between Caldecote and the Bourn Airfields Development. To fill that with infrastructure would remove this rural barrier and make Caldecote feel like an extension to the Cambourne sprawl and Bourn Airfield Development, thereby, again, eroding our village identity. b) Caldecote has a long history of surface water flooding. This field acts as vital open space to slow down water flow into the village. This leveraged in the Bourn Airfields Development plan by using it as wetland with natural attenuation ponds. c) The attenuation area with green landscaping was also going to provide an Active Travel route to the newly proposed C2C bus station, to be positioned on the north edge of the Bourn Airfield (around the same location as EWR is proposing to cross the A428). At the recent drop-in event EWR representatives appeared to know nothing of this planned C2C bus-stop. This walking area would also provide a pleasant, rural area for residents in the top end of the village that are not mobile enough to walk all the way down to Hardwick Woods. As Caldecote is squeezed more and more by ribbon development from Cambourne eastwards, this field was of much importance and its loss will affect the future health and wellbeing of residents. Its loss would also make access to the facilities on the Bourn Airfield Development more troublesome to access and will likely mean more people would be forced to get into the car instead of walk or cycle.

5. Fitness Course to the east of Highfields Road – This is a popular facility in the village, providing exercise, motivation and health & wellbeing to all residents from school children to adults. Loss of this will mean less opportunity for healthy exercise in a village more and more hemmed in by developments but also force people to have to drive to find an alternative.

6. Ancient Woodland – To the east is also a woodland over 200yrs old and an adjacent private track which forms part of a well-used circular route for exercisers and dog-walkers. A treasured rural track at the top of the village that provides exercise and well-being. The proposed train line cuts across this rural track which runs alongside the fitness course.

7. Freight will undoubtedly travel on the rail line though it is not yet known in what quantity. Nevertheless, bringing freight through the middle of a rural village when there were other opportunities to keep the line from being so close to our community is especially disappointing.

As EWR have failed to find a route that goes around the village as they have done for other communities, we ask that mitigation be provided in the way of continuing the A428 tunnel so as not to unnecessarily destroy so much of the village rural position and identity. The top end of the village relies heavily for its rural location, identity and boundaries on the field, rural entrance road and green space of the fitness centre and woodland walk. The rail-line in its current form would devastate all three and thereby destroy the integrity of the village of Highfields Caldecote and the well-being of its residents.

Yours sincerely,  
Polly Anne Field, Chair, Caldecote Parish Council

## Caldecote Community Hub @ The Pavilion Café

The community hub will be reopening on Tuesday 12th September 9.30 to 3.30pm.

Free tea, coffee with biscuits with milk provided by Highland Group from the BP garage.

Computer help can be given for accessing websites and government sites and free use of Wi-Fi. This Autumn we are hoping to continue aerobic chair exercises and Indian head massages. We have an array of local knowledge to point people in the right direction for information on services in and around the surrounding area.

Looking forward to seeing regulars and new residents of the village. Warm social and friendly space to meet old friends and make new friends.



---

### Bin collection changing to Thursdays from 18<sup>th</sup> September

Please note that that your sequence of bins may change, and you may have the same bin emptied 2 weeks in a row when the changes are implemented.

#### Bin dates for CALDECOTE:



Your next black bin (rubbish) collection date is **Thursday 21 September 2023**



Your next blue bin (recycling) collection date is **Thursday 28 September 2023**



Your next green bin (garden and food waste) collection date is **Thursday 28 September 2023**



## District Councillor News

### South Cambs Magazine

Expect to receive the Autumn edition by 28 August. If you don't get your copy, please email [scdc@smartdistribution.co.uk](mailto:scdc@smartdistribution.co.uk) or call 0800 6444 01. You can read the last edition of this quarterly magazine online:

<https://www.scambs.gov.uk/your-council-and-democracy/the-south-cambs-magazine/>. It is very useful and informative.

### Planes

#### Luton Airport Flight Path and Airspace Deployment (AD6) change

There's only a few weeks left before the AD6 Post Implementation Review (PIR) period ends on 22 September 2023. The CAA claimed it believes that this extension will provide a more representative data set for their review of how the airspace change has performed, including whether anticipated impacts and benefits in the original proposal and decision have been delivered. We know it has not, so we need to continue submitting reports on its effects on us.

Send an email to [noise@ltn.aero](mailto:noise@ltn.aero) or [noise.enquiries@ltn.aero](mailto:noise.enquiries@ltn.aero), and inform the RELAS team on [info@relas.uk](mailto:info@relas.uk). RELAS group is at <https://www.facebook.com/groups/relas.ad6>

Separating the airspace from Stansted flights for "safety" reasons is just part of the long term plan - all being done in different separate processes. This is the helicopter view: Luton airport has submitted a DCO application to government to increase its capacity from 18m to 32million passengers annually. Stansted is also planning to increase its capacity hence the separation of its airspace from Luton flights. The AD6 airspace design is flawed and is why airbraking is constantly used to bring flights down rapidly instead of gradually as is normal. Impacts therefore worse than LLA led us to believe. Hence a review is needed, supported by the data from reports we make.

### Trains

#### East West Rail

The selected route is alignment 1 that winds its way from Cambourne (north) to Cambridge South Station via Highfields Caldecote. Following the announcement on 26<sup>th</sup> May, I attended a number of community group meetings with EWR to continue raising our case, and find out their solutions to mitigate the problems their original proposal would cause. I attended a high-level meeting with the Council Leader and Director of Planning, and EWR Chief Exec Beth West and Strategy Director Will Gallagher. Both EWR officials stated that the line would be taken under the A428 and Highfields, as well as under the B1046 between Toft and Comberton. The EWR staff are using the consultation feedback to revise and reduce the embankments and viaducts along the route by up to 50%. The final proposal is expected to be ready for formal consultation around Spring 2024, and then submitted to the Government for a Development Consent Order (the planning permission to build it).

The Chancellor Jeremy Hunt's announcement of a £615 million Life Sciences package and the Cambridge 2040 plans for 250,000 additional houses announcement by Michael Gove, Levelling Up secretary shows the Government's growth plans for this area is going ahead. It is driving the EWR project to enable access to the Life Sciences hub in the Biomedical campus and other southern parts of the district. The Government did not discuss any of these plans with the Local Councils.

## **Cambridge South Station**

A further £200 million has been allocated to the four-platform Cambridge South railway station at Cambridge Biomedical Campus. The fully accessible station is due to be completed by 2025 and is expected to welcome 1.8 million passengers a year.

## **Automobiles**

### **GCP Making Connections: Bus Service Improvements & Sustainable Travel Zone**

The GCP published the result of the Making Connections consultation. Find full report at <https://bit.ly/GCPReportJun2023>. There was overall support for the proposed first step of improving bus services, and second step for active travel (cycling/walking). Many as expected objected to the third step of introducing Sustainable Travel Zone (STZ) in 2027/28 to reduce traffic level in the City and raise money to improve bus services. GCP Board discussed the report and now considering some core changes to the STZ proposal such as (i) peak hours only (ii) 50% discount for local SMEs (using vans/HGVs), (iii) 50 free days/year/registered car. More discussions ongoing.

### **Bus Franchising**

The Mayor of the Cambridgeshire & Peterborough Combined Authority (CPCA) Dr Nick Johnson with his team are actively working on a Bus Service Improvement Plan (BSIP) to bring in bus franchising in about 12-18 months. The CPCA is working with the GCP in joined up way to improve bus service in the area.

### **C2C – Cambourne to Cambridge busway**

Still very much in the picture as it is needed to deliver houses planned for Bourn Airfield. There is a significant Planning condition that only 500 houses can be built until it is fully available.

## **Other Local Issues**

### **Housebuilding/Land Supply**

Greater Cambridge has a 6.1 year future supply of housing land (2023-2028), higher than the national threshold of 5 years. This makes our area safe from speculative applications. The Environment Agency is objecting to applications for Bourn Airfield and Waterbeach until the supplier Cambridge Water (CW) proves to them it can provide without causing deterioration, but their contributions is later in the period so not significant effect.

### **Water Supply Consultation feedback**

Water Resources East have published some feedback from their consultation. They are working with other organisations to help address the Cambridge Water supply needs prior to the Fens Reservoir being developed.

**Regular Updates** Don't forget to check out my monthly reports to the parish councils on my blog at [www.tumihawkins.org.uk/caldecote-ward/reports](http://www.tumihawkins.org.uk/caldecote-ward/reports) for full details on these and more. Follow my Facebook Page <https://www.facebook.com/itsCouncillorTumi/> where I post up regular public information posts from community groups and other local authorities.

**Here to Help You** so contact me if you need help with SCDC services (planning, housing, housing repairs, benefits, council tax, bin collection, environmental health, noise nuisance, etc) by phone 01954 210840 or 07802 323269, email [tumi@tumihawkins.org.uk](mailto:tumi@tumihawkins.org.uk), @CouncillorTumi on Twitter



## Team Caldecote 1st Caldecote Rainbows and Brownies

What an exciting summer we've all had!

We learned all about an old English holiday called Oak Apple Day as part of our Trefoil 80 Challenge badge. We went to the cinema to see a special Girlguiding screening of the new Little Mermaid with lots of other packs. The girls also went to Clip n Climb and scaled walls. They were very brave and had a fantastic time. We danced in the rain, celebrated the 4th of July (with food and drink tasting!), made our own mini golf course and curling surfaces and tried archery. We made a mess with pendulum painting and even made mice from conkers!



Finally, we finished the term with a CSI style chocolate heist. The girls completed puzzles to gain clues to find out who stole the chocolate and recover it!

A big congratulation to Nia, Eva and Hope who earned their Bronze badges!

1st Caldecote Rainbows and Brownies meet every Tuesday during term time, 5.45-7pm at Caldecote Sports Pavilion.

Rainbows is our younger section aimed at girls aged 5 to 7, Brownies is for girls aged 7 to 10. Our Rainbows and Brownies try new things, develop their interests and self confidence. We work hard serving our community, being kind and looking after our planet too!

Contact us at [1stcaldecotebrownies@gmail.com](mailto:1stcaldecotebrownies@gmail.com)





## Caldecote Book Group

A friendly little group, we meet monthly at each other's homes (hosting is strictly voluntary) to discuss our book of the month, which usually leads to discussions about much, much more! We read a range of different genres from modern fiction to classics,

biographies, travel etc. meeting on Thursdays at 7.30pm. Whenever possible we borrow sets of books from the public library. If you'd like to pop along and see what our meetings are like, please contact us to find out about the next one.

Forthcoming meetings: (dates subject to change)

Aug 31 <sup>st</sup>	Oh William! / Elizabeth Strout
Sept 28 <sup>th</sup>	Isaac and the Egg / Bobby Palmer
Oct 26 <sup>th</sup>	Underland / Robert Macfarlane
Nov 23 <sup>rd</sup>	Slade House / David Mitchell

If you are interested in coming along to a meeting, please contact Hilary on 01954 210112 or [hil@manyfish.co.uk](mailto:hil@manyfish.co.uk) for further details.

---

## The Colour Wheel Hardwick Mindful Colouring Group

We meet in the cozy Cabin  
behind St Mary's Church,  
Hardwick CB23 7QS.  
Every second Tuesday.

Upcoming dates:  
12 Sept, 26 Sept (2pm – 4pm)

10 Oct, 24 Oct, 7 Nov, 21 Nov,  
5 Dec, 19 Dec (1pm – 3pm)

£4 donation which includes  
refreshments and material.

For more information contact  
Nicky 07539 429 394  
[kerranica@gmail.com](mailto:kerranica@gmail.com)





## Caldecote Village Hall, Furlong Way

The village hall provides a lovely setting and facility for village activities, events, clubs, parties, weddings, christenings, business meetings etc. It is set in its own grounds with plenty of grassed outdoor space for marquees, bouncy castles or just enjoying the fresh air, along with ample car parking. The hall is fully accessible to everyone, with separate male, female and accessible WC's and baby changing facilities. There is fully integrated PA system and hearing induction loop.

**The hall also now has full fibre Wifi installed, secure and included for within the hall rate**

### **Facilities**

Large Hall 10m x 8.5 m, accommodates up to 90 people

Meeting room 8m x 3.5m, accommodates up to 30 people.

Fully equipped kitchen, including some everyday crockery and cutlery ( excluding pots, pans and oven trays etc. ) and with a servers hatch to the main large hall

Table and chairs included in hire charge

Matching set of event crockery, cutlery, wine & water glasses for up to 90 place settings available for a small additional charge

Commercial dishwasher with 4 minute wash cycle

Fully licensed for music entertainment and the sale of alcohol

Off road parking for up to 31 cars including 3 disable bays, and cycle rack.

Free 1 hour set up and 1 hour clear up time offered – we do not clean after every hire, but ask hirers to respect the facilities provided and leave the hall clean and tidy and as found. This also helps us to keep hire rates to the minimum possible.

Please note the village hall organisation is a charity run entirely by unpaid volunteers for the benefit of the village and surrounding communities. Anyone who is willing to offer a small amount of their time and become a member of the hall committee will be very welcome.

Most of the current committee have been running the hall since it opened in 2001, and consider that, by now, they have done their bit and are looking to step back. Without anyone coming forward to help, the hall may have no option but to close. Please consider if you would be able to give a few hours a month to help out and run this great facility that would be a huge loss to the village. If you would be willing, please contact the committee via the booking email to find out more, speak to one of the trustees listed in the Village Directory at the back of this Journal or come along to the **AGM on Thursday 19<sup>th</sup> October, at 7.30 pm at the hall.**

Please come along if you would be interested in helping in any way.

## Current regular Village Hall classes and clubs.

### Monday

1.00 - 3.00pm	Crafternooners – social crafting get-together for all ages ( every other week )
4.00 – 6.00pm	Dreamcatcher dance for children
7.00 – 10.00pm	Dry Drayton Bridge Club

### Tuesday

9.30 -10.30 am	Pilates
10.00 - 10.45am	Sweaty Mamas keep fit – mother & baby keep fit / exercise group
7.30 - 10.00pm	Women's Institute (3rd Tuesday of the month)

### Wednesday

9.30 – 10.30 am	Pilates
6.00 – 7.00pm	Boogie Bounce – keep fit classes on individual mini-trampolines to music
7.30 – 9.00pm	Comberton Young Farmers Club ( most / not all Wednesdays ) – social group for ages 14 – 26. You don't have to be a farmer to come along !

### Thursday

6.30 - 7.30am	Pilates for all levels
---------------	------------------------

### Friday

4.00 – 5.00 pm	Junior Art Club
----------------	-----------------

### Saturday

9.15 – 10.15am	Pilates for all levels
----------------	------------------------

If you are interested in any of the above, either contact Simon at the e-mail address below, and we will pass on your details to the class organiser, or pop along to the hall at the time of the class / club for more information.

To enquire about availability and pricing, look or book, contact Simon Gautrey on e-mail [caldecotevillagehallbookings@btinternet.com](mailto:caldecotevillagehallbookings@btinternet.com).

The Village Hall is run by Caldecote Village Institute Ltd, a registered charity, is independent, and receives no financial support from the Parish Council or South Cambs DC.

Charity number:1114201, Registered in England & Wales, company number 5736926

# HALLOWEEN

Caldecote loves a great Halloween evening with houses decorated and sweets shared with the children.



It's a great opportunity for taking an evening walk and meeting others.



Just remember the rule:

No pumpkin or  
Halloween decorations,  
No knocking on the  
door.

Enjoy the evening with those  
who wish to participate.  
There is usually plenty of  
houses joining in the fun.



## Caldecote Village Club "Your Local"

Hire of the Club for Christenings,  
Birthdays, Anniversary's,  
Weddings, Wakes etc. If your  
looking for a venue please contact  
Russell Beresford to discuss.

- **NON-MEMBER'S ALWAYS WELCOME**
- Pool & Dart Teams
- **Large Projector Screen with HD Sky Sports & BT Sports**



### *Opening Times*

**Thursday 7pm till 11pm**  
**Friday 7pm till Midnight**  
**Saturday 4pm till 10pm**  
**Sunday 3pm till 7pm**

First Years Membership only £5

**For more information on becoming a member please contact Caldecote Village Club**

**on 01954 210791 or [caldecotesocialclub@gmail.com](mailto:caldecotesocialclub@gmail.com).**

Hire of the Club - Free to Members - Weddings, Christenings, Birthdays, Anniversary's, Wakes etc.

Contact The Club or [caldecotesocialclub@gmail.com](mailto:caldecotesocialclub@gmail.com)



Dear Friends,

As I write, it is an overcast, cool August afternoon. Where did our Summer go to?! It feels as if Autumn has arrived already. Traditionally, Summer holidays are a time for many of us to relax, rest, and recharge our batteries. A time for getting up later, maybe, with no need to rush to school – or to work! Summer can be a good opportunity to reflect on the year so far.

Many of us may have been facing difficulties, with our own health or that of loved ones, for example, or our life circumstances may be challenging. As well as present troubles, we may also have future worries and uncertainties. In the face of all we might be feeling or facing at the moment, Christians believe that we can turn to God, asking for help and strength. The more difficult our circumstances may be, the more tempting it is to retreat into ourselves, rather than reaching out for help. In all our anxieties, Jesus reaches out and promises rest for our minds and to help us to regain our sense of inner peace and calm: “Come to me all who are weary and are carrying heavy burdens,” he says, “and I will give you rest.” (Matthew 11:28) Jesus is not saying life won’t ever be hard, but he is saying the comfort and rest he can give us will help us to get through. Faith can help make our lives more bearable. The peace and rest we receive from him helps us to cope with whatever life throws at us and reassures us that he is with us and won’t ever let us go.

Looking ahead to the Autumn term, all are most welcome to join us at any of our services. Two highlights: our Harvest Festival this year is being held at Childerley Chapel on Sunday 1 October at 11am. And our Remembrance Day Service will be on Sunday 12 November, starting at 10:50am in the Peace Garden. I look forward to seeing you soon.

God Bless,

Clare

*Revd Clare Coates,*

*Lead Minister for Dry Drayton, Hardwick and Caldecote with Childerley*

[clarecoates@lordsbridge.org](mailto:clarecoates@lordsbridge.org)

Our website: <http://www.caldecotechurch.org.uk/>

*Follow us on:*

*Instagram:* [@lordsbridge\\_team](https://www.instagram.com/lordsbridge_team)

*Facebook Page:* <https://www.facebook.com/LordsbridgeTeam>

## Services September to November 2023

Date	Time	Service	Place
<b>3 September</b>	11am	<b>Holy Communion led by Revd Priscilla</b>	St Michael and All Angels Church
<b>10 September</b>	11am	<b>Morning Prayer led by Fiona Whelan</b>	Village Hall, Highfields Caldecote
<b>17 September</b>	3-4pm	<b>Café Church with Revd Clare and Fiona Whelan</b>	Village Hall, Highfields Caldecote
<b>1 October</b>	11am	<b>Harvest Festival Holy Communion led by Revd Clare</b>	Childerley Chapel, Childerley Hall
<b>8 October</b>	11am	<b>Morning Prayer, led by Fiona Whelan</b>	Village Hall, Highfields Caldecote
<b>15 October</b>	3-4pm	<b>Café Church with Revd Clare and Fiona Whelan</b>	Village Hall, Highfields Caldecote
<b>29 October</b>	10:30am	<b>Lordsbridge Team Fifth Sunday service of Holy Communion</b>	Dry Drayton Church
<b>5 November</b>	11am	<b>Holy Communion led by Revd Clare</b>	St Michael and All Angels Church
<b>12 November</b>	10:5am	<b>Remembrance Sunday, led by Fiona Whelan</b>	The Peace Garden
<b>19 November</b>	3-4pm	<b>Café Church with Revd Clare and Fiona Whelan</b>	Village Hall, Highfields Caldecote

### Online services continue

On zoom: <https://zoom.us/j/89870702475> (ID 898 7070 2475). *Every Sunday at 11am.*

### Other Services



Join in with other churches across the team. [www.lordsbridge.org](http://www.lordsbridge.org)

## Holiday Hamper Schemes

Caldecote Church partners with Sitwells Trust and our local primary school to offer a supermarket voucher to families who might appreciate some help through both the Summer and Christmas holidays. If you would like to donate to this scheme, please click on the link below:

<https://givealittle.co/campaigns/94ebc8e8-74f3-48f2-99a9-ea93433f5381>



---

## Sitwell's Charity & Town Lands

Our charity receives a small income from agricultural land in Caldecote just south of Carrara Farm. The aim of the charity has always been to provide some assistance to those members of the parish most in need. In recent years we have contributed to the Christmas and summer hamper schemes and helped with the cost of school trips for pupils at the Primary School.

If you know of an individual, family or good cause that might benefit from some modest financial assistance, please contact Revd Clare: [clarecoates@lordsbridge.org](mailto:clarecoates@lordsbridge.org)

Donations are also most welcome and can be made at [Sitwell's Charity and Town Lands - JustGiving](#)



## OUR LADY OF LOURDES AND ST JOHN FISHER PARISH

### St John Fisher's Special Visitor

A few weeks back, Bishop Peter Collins, the new Catholic Bishop of East Anglia visited the Church in Cambourne and celebrated Mass with St John Fisher Parish. The church was full to the brim with people keen to see his holiness and join in the service which included rousing singing of hymns.

During the Mass, four candidates were Confirmed. Confirmation is the sacrament by which Catholics receive a special outpouring of the Holy Spirit. Through Confirmation, the Holy Spirit gives them the increased ability to practice their Catholic faith in every aspect of their lives and to witness Christ in every situation. After Mass, we enjoyed our usual tea, coffee, and cake along with a chance to meet Bishop Peter and pass him intentions for prayer.

We are now starting to plan for 2024 Confirmation (school year 9 and above) and First Holy Communion (school year 3 and above). If you have a child who wishes to start that journey in faith, please complete the form on our website detailed below.

Contact Details: Tel: 01223 832397; Mobile: 07754 227468.

Email: [cambourne.sawston@rcdea.org.uk](mailto:cambourne.sawston@rcdea.org.uk)

Mass Times: Sat (Vigil Mass) 17:00, Sun 17:00, Mon-Wed 12:30, Thu-Fri 18:30, all in Cambourne Church. Cambourne Church Centre, between Jeavons Lane and High Street, CB23 6GW

Website: <http://cambournerc.com>.

Facebook: [www.facebook.com/Cambourne.Sawston](http://www.facebook.com/Cambourne.Sawston),

YouTube: Our Lady of Lourdes and Saint John Fisher Parish



# Gardening Tips for the Autumn

## by National Trust's expert gardeners.

Autumn is a special time of year for many gardeners. Allotments are brimming with fruit and veg and the soil in your garden will still be warm enough to plant spring bulbs, including daffodils, tulips and crocuses. To help you make the most of the season we're sharing tips on soil health, flower border maintenance and how to choose plants to invigorate the senses.

### Mulching your flower borders

If your compost is ready to use it can be spread on the soil between plants to hold in moisture, feed next year's growth and insulate roots from the worst of the winter frosts. You can clear dead stems and foliage now too or leave them standing until spring to provide habitat for insects.

### Harvesting fruit and vegetables

Now is the time to collect the last of the summer crop before the cold weather comes. Autumn crops such as apples, pears, squash and leeks should all be ready to start harvesting now.

### Planting bulbs and sowing seeds

Tulip, crocus and daffodil bulbs can be planted in pots or flower borders. On a large area of grass try planting crocus bulbs in drifts for a vibrant colour show in early spring. You can also sow seed of hardy annuals in early autumn, including cornflowers, scabious and winter salads.

### Clearing leaves

When the leaves start to fall and the season heads into mid to late autumn it's a good idea to clear leaves from lawns and flower borders. Keep the leaves to make leaf mould to feed next year's plants. Do this by piling leaves in wire cages and leaving them to break down. Or use strong bags tied at the top and add puncture holes near the base for air to circulate. This makes a good mulch to use on your plants next year. Removing leaves from around roses is also a good idea as the leaves can harbour diseases during the winter.

### Preparing your soil

Bare beds can be mulched with compost ready for planting straight into in spring. Weedy beds may need digging which can be hard work. You could try covering them with cardboard or an old woollen carpet off-cut. The cardboard and carpet will block out the light from any weeds and cause them to die back. This will make it much easier to dig in spring.

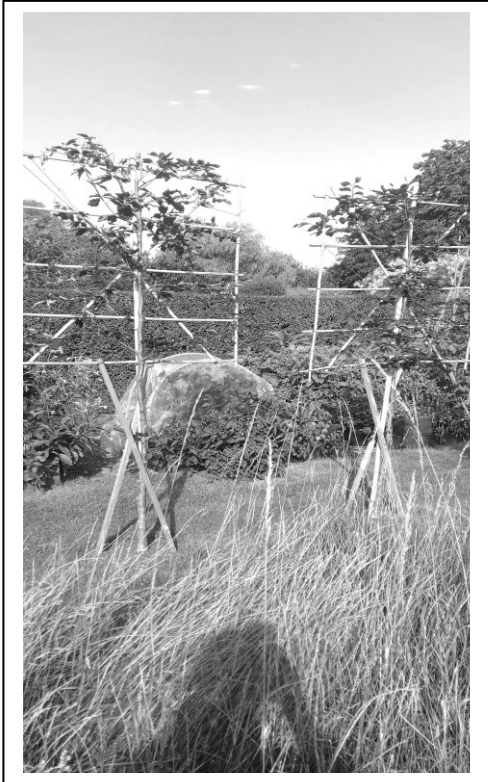
### Green manure

If you can't produce enough garden compost you can improve your soil by growing green manure. These crops are grown on bare ground either in spring or autumn and dug into the soil a few months later. This method enriches the soil and improves the structure. Crimson clover (*Trifolium incarnatum*) has the ability to fix nitrogen from the air into nodules on their roots. The nitrogen is then released into the soil as they break down.

To read more go to: ~

<https://www.nationaltrust.org.uk/discover/gardening-tips/gardening-tips-for-autumn>

# Gardening Thoughts



It is said that the best time to plant a tree is thirty years ago; and the next best time is now,

Given the growing awareness of the vital part trees play in keeping our planet healthy and liveable, many of us would probably like the opportunity to grow more trees ourselves. But they can be quite big and take up a lot of space which most of us simply don't have.

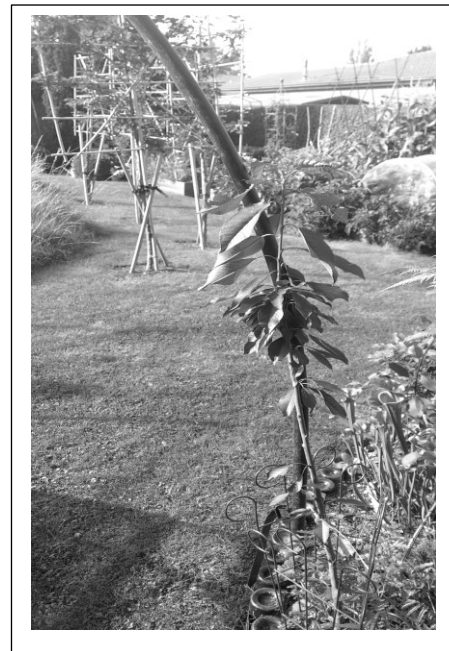
There are some options which might suit those with more modest gardens. These are pleached Copper Beech. They're about 4 years old now. You can buy them ready trained as these are, or, if you have the time and inclination, you can buy the whips and do it yourself, a much cheaper option. They look a bit weird at the moment, but in another 3 years, the bamboo frame can come off as the trees will have set in the desired position. As you can see, they are very flat and can be pruned to maintain that shape and consequently don't require a lot of space.

Another option is a Cordon, this is a Cherry which will be trained as a single leader into an arch, there's an Apple tree on the other side.

Again, the side shoots are pruned to short lengths either side of the main leader. We used a piece of heavy-duty polypropylene pipe that was left over from the Ground Source Heat Pump installation, but essentially you can use whatever you want to form an arch.

Whatever you do this autumn, enjoy your garden.

Julie & Graham Southon.  
West Drive.





## Open Eco Home Tours and Talks 14 Sept - 20 Oct

Cambridge Carbon Footprint is delighted to present a new season of tours and talks designed to inspire, inform and involve Cambridgeshire residents in the processes and practicalities of home energy improvements through retrofit and design.

With 10 planned Eco Home tours, across a wider region of the county than before, and 5 free talks there will be something for everyone to engage with.

Eco Home Tours, energy saving talks and events include:

### 7 Retrofits of inspiring homes

- Wide variety and ages and now featuring homes in Caxton, Guilden Morden, Heydon, and St Ives
- Now beautiful, comfortable homes with a tiny energy consumption.

### 3 New-builds:

- Marmalade Lane - revisiting a cohousing community of 42 homes 5 years on
- Self-builds in a development of 9 very different new homes in Caxton
- Building Hope - modular eco homes for the homeless

### Talks and events:

- Human Library - book out one of our experts and experienced volunteers
- Low Carbon Heating - learn about heat pumps and other low carbon options
- Cambridge Retrofit Guide - Practical advice to retrofitting your home; what measures, how much and with who?
- Low Cost Home Energy Savings for All - low cost and solutions for home owners and renters.
- Open Eco Homes Retrospective - what our hosts have learnt in 10 years



For a full list of OEH events as they become available see  
<https://cambridgecarbonfootprint.org/open-eco-homes/>



## **Bedfordshire Cambridgeshire Northamptonshire**

### **Wildlife Trust BCN West Cambridgeshire Hundreds Update: Sept 2023**

The Wildlife Trust for Beds, Cambs and Northants is a local wildlife conservation charity. We are part of a network of UK charities, connected by our umbrella organisation the Wildlife Trusts. Our job is to achieve bigger, better, and more joined up habitats, for wildlife and people. This means tackling both the biodiversity crisis and climate chaos, by working in partnership locally and nationally. We manage over 100 nature reserves, advise landowners how to manage land better for wildlife, carry out research and monitoring to advise our work and increase scientific knowledge, and work with communities to connect people with nature, educate, and inspire action.

If you walk regularly on one of our nature reserves, please consider contributing to the costs of keeping it safe and healthy. Here are our most local sites, all within 12 miles of our head-office in Cambourne:

- Cambourne Nature Reserve
- Hardwick Wood Nature Reserve
- Gamlingay Wood Nature Reserve
- Waresley and Gransden Woods Nature Reserve
- Hayley Wood Nature Reserve
- Trumpington Meadows Nature Reserve
- Overhall Grove

People become a member of the Trust for a variety of reasons, here are a few:

- If you love seeing birds in your garden, are lucky enough to be visited by a hedgehog, or like spotting butterflies, then you can help us help them, by supporting our movement
- You can contribute towards reducing the impact of the climate crisis and therefore create a better environment for future generations. On our website, you can find out more about our Great Fen project, which is restoring peatland habitat and locking up carbon.
- Your money could support the management of the local nature reserve that you visit
- Members get discounted tickets to events like walk, talks, family activities and workshops
- Donations directly support our work inspiring and teaching children and families
- Our members magazine can help you learn more about local wildlife
- You can get a discount on joining the Cambridge University Botanic Gardens

Money isn't everything, there are other ways to support us and our cause, for example:

- Becoming a [volunteer](#)
- Getting your work involved by coming on a [Wild Work Day](#)
- Applying for a [Wildlife Gardening Award](#)

So, if you are looking for a way to take action on climate change, entertain your children outdoors, get some exercise, learn more about local wildlife, give something back to your community, or improve your garden for wildlife, then please join us!

Email: [rebecca.neal@wildlifebcn.org](mailto:rebecca.neal@wildlifebcn.org)  
Facebook/Twitter: @wildlifebcn

Facebook: @BeccaBadgerWTBCN  
Events: [www.wildlifebcn.org/events](http://www.wildlifebcn.org/events)



## Caldecote, Dry Drayton & Hardwick Community Car Scheme

We want to take this opportunity to say a **BIG THANK YOU** to all our volunteers, be it drivers, co-ordinators who provide their time generously and are an amazing help to enable this Car Scheme to run. Together, they support over 140 passengers across our villages - in July alone, the drivers have undertaken 100 different trips - that needed a lot of drivers!

Anyway, by the time you read this we will hopefully have enjoyed a special coffee morning at Hardwick Cabin. (We had hoped for a garden tea party but with our dismal summer that seemed less possible!) and hope that as many drivers and partners etc can join us to say a proper thank you to them all for all the many lifts they have given.

As you will be aware the Car scheme is run entirely by volunteers who give their time freely but with expenses covered. There are many aspects of the car scheme that need help and to keep this valuable service going to support those in need in our local community, we continually looking for volunteers. If you have some spare time in your week and enjoying engaging with people, then this friendly scheme maybe something that is of interest to help with.

Obviously, the driving is crucial, so help is always needed here. However, there are other areas you can help with too.

We were approached by someone, who did not wish to drive but was happy to give some help when she had time. With her IT skills, she was willing to help with the constantly needed publicity, such as our drivers and passenger handbooks - and also putting car scheme material regularly into all the different village magazines. She also stepped in to help cover over summer, as we had not realised that had two of our main co-ordinators off abroad on holiday at the same time.

So, you can see that, if you feel like helping with this valuable local service, we would be delighted to hear from you.

We do urgently need another co-ordinator to take calls from passengers, find a driver and enter them onto the computer. This would suit somebody who enjoys communicating with people, not afraid to use a computer (training is given) and has some spare time in the week.

As we are a charity, we would welcome help with organising fundraising/catering for the odd event we hold.

If you feel like helping in any way, please contact Sheila on email [sheila1pc@yahoo.co.uk](mailto:sheila1pc@yahoo.co.uk) or call 01954 210638. She will be delighted to hear from you.

# VILLAGE DIRECTORY

Please help to keep this directory up to date. If you are aware that any information is incorrect or if your group is not represented, please inform the Editors: [Journal4Caldecote@gmail.com](mailto:Journal4Caldecote@gmail.com)

## **1st Caldecote Rainbows & Brownies**

Tuesdays 5.45pm to 7.00pm, the Pavilion  
(term time only)  
Emma Hall & Vicky Rees (Unit Leaders)  
[1stcaldecotebrownies@gmail.com](mailto:1stcaldecotebrownies@gmail.com)

## **Age UK Community Warden**

Kirsten Monk - 07812 495997

## **Catholic Church**

Melanie Ward - 212714  
[melanie@scotsdowne.fsnet.co.uk](mailto:melanie@scotsdowne.fsnet.co.uk)

## **Cambridge News**

Keep them informed of what's going on.  
News Desk - 01223 632251 or 632259  
[newsdesk@cambridge-news.co.uk](mailto:newsdesk@cambridge-news.co.uk)

## **Caldecote Book Group**

Monthly meetings  
Hilary Spargo - 210112

## **Caldecote Community Primary School**

Head Teachers: Karen Stanton & Becky Snelling - 210263  
School Secretary: Lesley Whitehead -210263  
[office@caldecote.cambs.sch.uk](mailto:office@caldecote.cambs.sch.uk)  
[www.caldecoteprimaryschool.org.uk](http://www.caldecoteprimaryschool.org.uk)

## **Caldecote Facebook Group**

[www.facebook.com/groups/caldecote/](http://www.facebook.com/groups/caldecote/)  
Admin Email:  
[caldecotefacebookgroup@gmail.com](mailto:caldecotefacebookgroup@gmail.com)

## **Caldecote Journal**

All contributions welcome.  
Email: [Journal4Caldecote@gmail.com](mailto:Journal4Caldecote@gmail.com)

## **Caldecote PreSchool**

Meets Monday to Friday, from 8.00am - 5.30pm (with lunch from 12.00-1.00)  
Website:  
[caldecotepreschool1.wordpress.com](http://caldecotepreschool1.wordpress.com)  
Telephone: 01954 210841

Manager: Steph Taylor:

[caldecotepreschool@outlook.com](mailto:caldecotepreschool@outlook.com)

Admissions: Anesta Cooper

[admissions.caldecotepreschool@outlook.com](mailto:admissions.caldecotepreschool@outlook.com)

Trustee Chair: Jemma Hoban

[chair.caldecotepreschool@outlook.com](mailto:chair.caldecotepreschool@outlook.com)

Secretary: Helene Stewart

Treasurer: Farah Clark

Trustee: Louisa Joyce

## **Caldecote School Governors**

Please contact school directly if you have an issue you'd like to raise with the Governors.

Co-Chairs: Kate Duncombe and Pippa Smith

[Chair@caldecote.cambs.sch.uk](mailto:Chair@caldecote.cambs.sch.uk)

Clerk To Governor: Katie Tween

Vice Chair: Mary-Anne Claridge

Emma Hall

Vicky Miles

Joanna Skiba-Szymanska

Jay Surti

Shweta Tripathi

## **Cambourne Village College**

01954 284000

## **Care Clubs**

Nichola Church - 01954 212636

[careclubs@caldecote.cambs.sch.uk](mailto:careclubs@caldecote.cambs.sch.uk)

Caldecote Primary School

## **Comberton Village College**

01223 262503

## **County Councillor**

Michael Atkins – 07968 264637

[matkinslibdem@gmail.com](mailto:matkinslibdem@gmail.com)

## **District Councillor**

Tumi Hawkins - 210840 or 07802 323269

[clir.hawkins@scambs.gov.uk](mailto:clir.hawkins@scambs.gov.uk) &

[tumi@tumihawkins.org.uk](mailto:tumi@tumihawkins.org.uk)

Blog: [www.TumiHawkins.org.uk](http://www.TumiHawkins.org.uk)

Twitter; @CouncillorTumi

FB page: @itsCouncillorTumi

**Community Car Scheme**

- Caldecote, Dry Drayton and Hardwick.

Gill Stott 07464 069 483

Lizzie Coe 07387 395 296

Derek Evans 07464 052 521

In emergencies only: Sheila Stephenson -  
01954 210638

Other helpful agencies to contact for help:

Panther Taxis - 01223 715715

Cambridge Country Cars - 01954 211742

Age UK - 0800 055 6112

Silverline - 0800 470 8090

Care Network - 01954 211919

Volunteer drivers always needed. Please call  
Sheila on 01954 210638.

**Doctors**

Bourn Surgery

Emergencies - 01954 719313

Appointments - 01954 719469

Repeat Prescriptions

Fax - 01954 718012

Comberton Surgery

Appointments/Emergencies -

01223 262500

Repeat Prescriptions - 01223 262399

**Evangelical Church**

Rev. Kate Gaze - 01954 211900 /

07484 866966

minister.hechurch@gmail.com

**Hardwick and Caldecote Cricket Club**

Chris Fuller – 211226

**Local History Group**

Sue Day – 210655

caldecoteLHG@aol.com

**Monday Crafternooners**

cb23.crafternooners@gmail.com

Facebook: @cb23.crafternooners

**MP**

Anthony Browne – 020 7219 8089

anthony.browne.mp@parliament.uk

**Parish Council**

1st Thurs ea. month, 7pm @ The Pavilion

Chair: Cllr Polly Anne Field - 212230

Vice Chair: Cllr Helen Cartwright

Cllr John Barker

Cllr Nicola Pritchard

Cllr Sharon Pedley

Cllr Priya Nair

Cllr Mary-Ann Claridge

Clerk: Alan Melton - 07771 524093

parishclerk@caldecote.gov.uk

www.caldecote.gov.uk

**Petcare Circle**

Care for small pets while owners away.

New members welcome

Sarah Bell - 210892

sbell2008@btinternet.com

**Police**

Cambourne Police Station, Sackville Way,

Great Cambourne, Cambridge, CB23 6EG.

Call 101.

cambourne.npt@cambs.pnn.police.uk

In case of emergency, phone 999

**Crimestoppers**

Call in confidence, you do not have to give  
your name. 0800 555 111

**Pre-School Music Group**

Tuesday 9.15am

Friday 9.15 to 9.45am in the Village Hall

Deborah Speed - 01954 211438

**PTA**

Parents are welcome to come along to all

PTA meetings.

Chair: Rachael Goad

Secretary: Katy Reeves

Treasurer: Jo Place

Caldecoteschoolpta@gmail.com

**Social Club**

Chair: Russell Beresford

Secretary: Claire Dowse

Treasurer: Simon Waters

Club - 210791

caldecotesocialclub@gmail.com

**South Cambs District Council**

[www.scambs.gov.uk](http://www.scambs.gov.uk)

Road Repair – 03450 455212

Street Light Failure – 0800 253529

**Sports and Social Pavilion**

Available for hire.

Bookings: Helen Cartwright

Enquiries:

[pavilionbookings@caldecote.gov.uk](mailto:pavilionbookings@caldecote.gov.uk)

**St Michael and All Angels Church,  
Caldecote with Childerley,**

one of the Lordsbridge team parishes

[www.caldecotechurch.org.uk](http://www.caldecotechurch.org.uk)

**Vicar**

Rev. Clare Coates - 07818 618795

[revdclare.coates@gmail.com](mailto:revdclare.coates@gmail.com)

Churchwarden:

[www.caldecotechurch.org.uk](http://www.caldecotechurch.org.uk)

**Vets**

Ashcroft, Hardwick – 210250

**Village Hall**

Chair: Tom Footman - 210318

Company Secretary: Saskia Dart

Treasurer: Saskia Dart - 210526

Bookings: Simon Gautrey

[caldecotevillagehallbookings@btinternet.com](mailto:caldecotevillagehallbookings@btinternet.com)

Jan Roberts

Michael Johnson

Simon Gautrey

David Phillips

**WI**

Meets every third Tuesday of the month.

New members welcome.

President: Hazel Steel - 01763 269955

Secretary: Lynda Gilchrist – 211448

**Village Defibrillators**

In the wall by the shops,  
Furlong Way. CB23 7ZH

&

One at the Pavilion

**Mobile Library – Route C11**

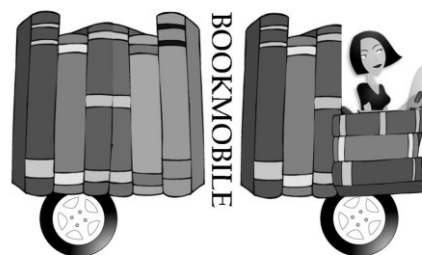
Nr 117 Highfields Road, Caldecote Highfields

The 2nd Thursday of the month, 2:30 pm - 3:00 pm

Caldecote Primary School

The 2nd Thursday of the month, 3:15

pm - 4:00 pm





# Caldecote School PTA Christmas Fair

Saturday 2nd December  
2-4pm

Refreshments, Santa's grotto, toys  
and books, crafts and gifts, the  
Rainbow Raffle and much more.

Free entry, all proceeds to the school.  
Everyone welcome!